

Daily Market Watch

Office of Regional Economic Integration

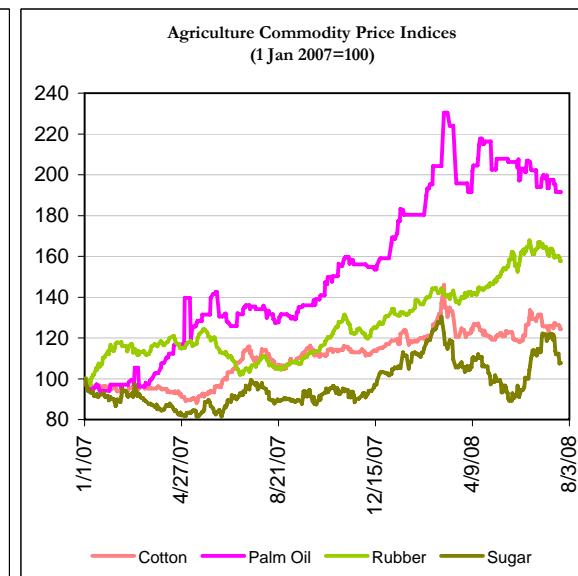
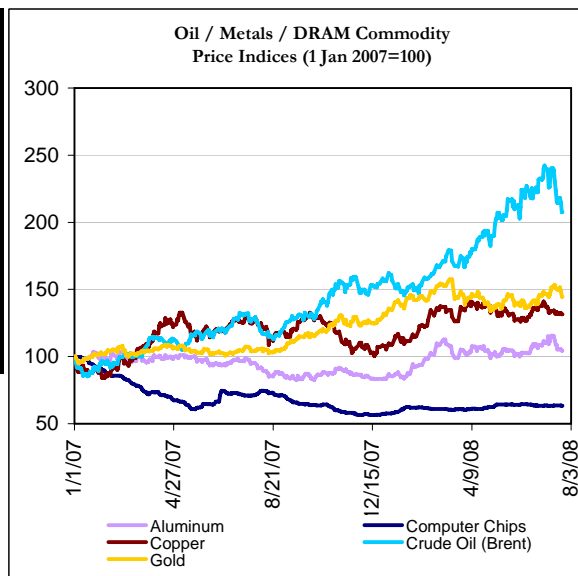
24/Jul/08 9:53 Manila

COMMODITY PRICES

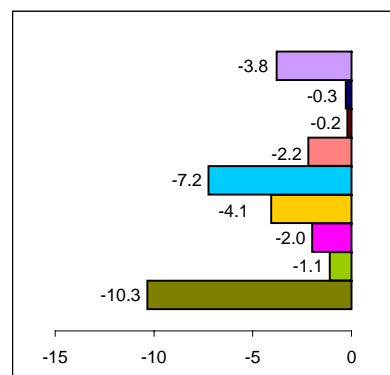
	Unit	Latest Closing	% change from Previous Day	% change from 1-Jan-07
Aluminum	US\$/metric ton	2956.25	-0.97	4.42
Computer Chips	DRAMeXchange benchmark index	2932.46	-0.35	-36.63
Copper	US\$/metric ton	8297.00	-0.65	31.53
Cotton	US cents/pound	76.10	-1.17	24.45
Brent Oil	US\$/barrel	124.80	-3.33	107.55
Gold	US\$/troy oz	920.85	-2.70	44.61
Palm Oil ¹	US\$/tonne	1134.50	0.00	91.48
Rubber ²	US\$/tonne	314.74	-1.04	57.69
Sugar	US cents/lb	13.80	0.29	7.81

¹Latest closing price from 18 July 2008

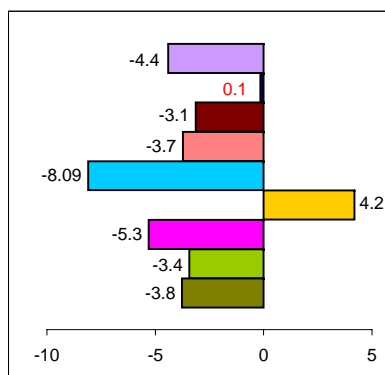
²Singapore Commodity Exchange, No. 1 Rubber Smoked Sheets, 1st contract



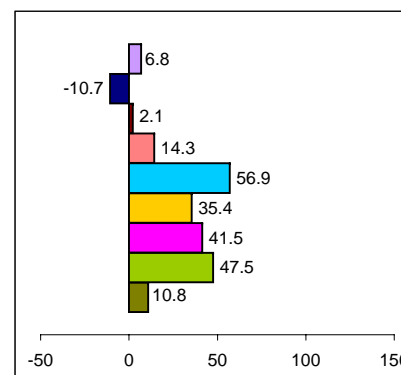
One-Week Change



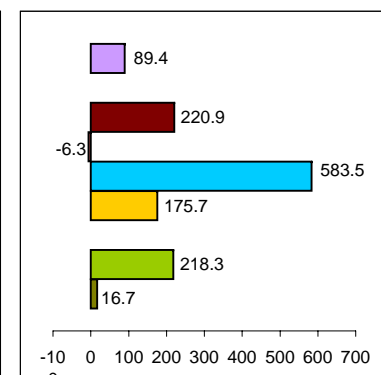
One-Month Change



One-Year Change



Change Since End-June 1997



Source: Based on data from Bloomberg.