

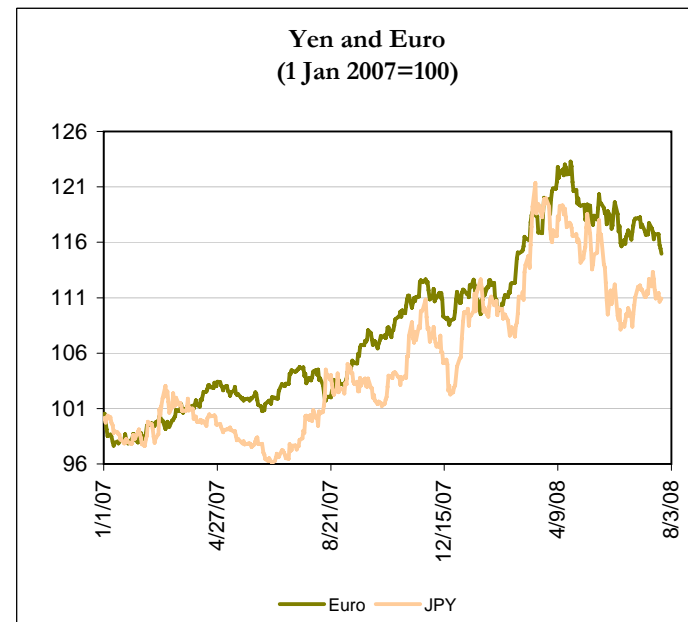
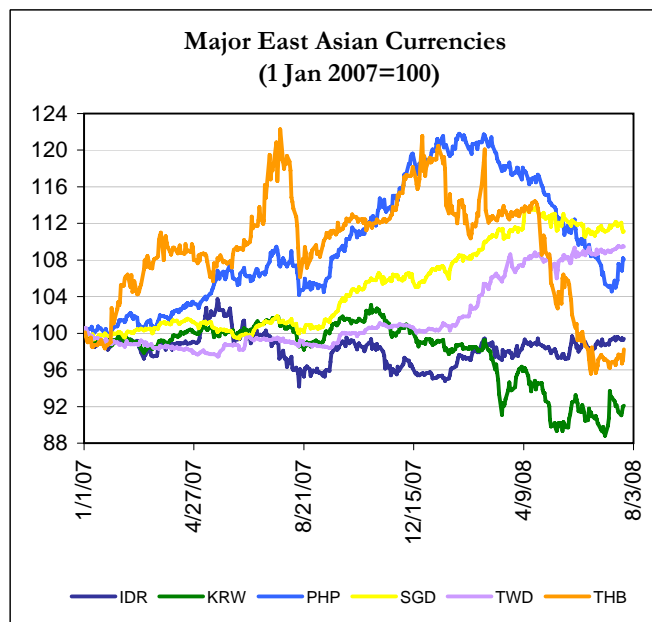
Daily Market Watch

Office of Regional Economic Integration

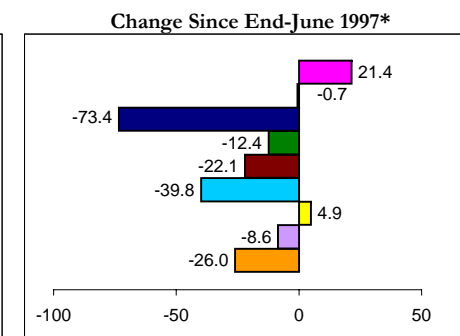
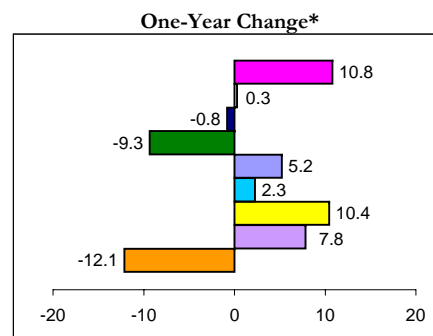
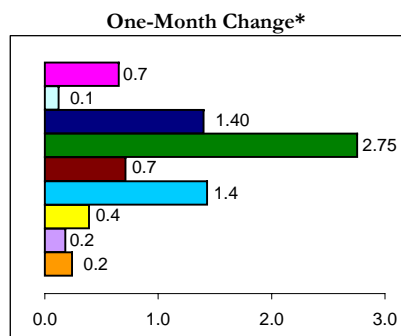
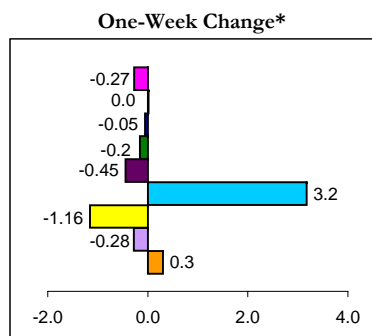
24/Jul/08 9:56 Manila

CURRENCIES

	Latest Closing	% change from Previous Day*	% change from 1-Jan-07*
Euro	0.64	-0.6	18.9
Japanese yen	107.90	-0.5	10.3
Chinese yuan	6.83	-0.1	14.4
Hong Kong dollar	7.80	0.0	-0.3
Indonesian rupiah	9145.00	-0.1	-1.7
Malaysian ringgit	3.24	-0.1	8.9
Korean won	1009.50	0.4	-7.9
Philippine peso	43.82	1.3	11.9
Singapore dollar	1.36	-0.5	12.4
New Taiwan dollar	30.41	-0.1	7.2
Thai baht	33.38	0.1	6.2



- PRC
- Hongkong, China
- Indonesia
- Rep. of Korea
- Malaysia
- Philippines
- Singapore
- Taipei, China
- Thailand



* Based on the US\$ value of local currency. Negative values indicate depreciation of local currency, and positive values indicate appreciation.

Source: Based on data from Bloomberg.